



# INDUSTRIAL PACKAGED STEAM BOILER

Vertical Water Wall - Horizontal Drum Water Tube

9.6 to 24 HP Gas Fired

## THE PARKER BOILER DESIGN

The Parker Boiler water tube design offers an extremely efficient, reliable steam boiler built for the long term and ease of maintenance. The Parker Boiler design offers many advantages. Compare ours to the competition.

### ADVANTAGES

#### 1. Safety

The Parker Boiler tube bundle is extremely flexible and offers a long life with a 25 year warranty against thermal shock.

#### 2. Package Complete Boiler

Each unit is Factory Assembled & Fire Tested

#### 3. Large Heating Surface

A large amount of heating surface provides increased efficiency, long boiler life and minimizes chances of scaling. Compare ours to the competition.

#### 4. Naturally Circulating Design

The 100 Series Boilers are designed to promote natural circulation of the water based on the heat applied to the lower tubes. The rising water in the tubes is released into the steam drum. The cooler water in the drum proceeds down the downcomer to the mud leg.

#### 5. Efficiencies

Sealed Combustion Chamber offers efficiencies to 84% with low excess air levels.

#### 6. Sealed Combustion

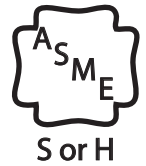
Less heat loss due to Water Wall Construction & Sealed Combustion Chamber Design



## 100 Series Steam Boilers 9.6-24 HP

### Industrial Packaged Steam Boiler

Pressures to 200 PSI



SCAQMD Certified to 1146.2

#### 12. No Thermal Shock

Flexible tubes, no thermal shock problems.

#### 13. Heavy Duty Boiler Tubes

Extra heavy boiler tubes 1-5/16" OD. minimum 0.12" (11GA) heavy thickness steel, built for long term service life.

#### 14. Size

Units can go through a standard 35" door.

#### 15. Codes

All Parker Boiler Steam Boilers are manufactured in accordance with the ASME Power & Heating Boiler Codes and registered with the National Board of Boiler and Pressure Vessel Inspectors. The standard natural gas fired model is furnished in conformance with UL Standard 795 & ASME-CSD-1.

#### 7. SCAQMD Certification

SCAQMD Certified for less than 20ppm NOx.

#### 8. Metal Fiber Burner

Low NOx Heavy Duty Cylindrical Metal Fiber Burner.

#### 9. Blower

Variable speed blower for electrical energy savings.

#### 10. High Turn Down

The Standard Combustion System offers turn downs from 4 or 6 to 1. For reduced cycling.

#### 11. Two Stage or Full Modulating Firing

Two Stage or Modulating Firing for accurate steam pressure tracking.

PARKER BOILER CO.  
5930 Bandini Boulevard  
Los Angeles, CA 90040  
Tel (323) 727-9800  
Fax (323) 722-2848  
www.parkerboiler.com

BROCHURE 100 2A0

"Never a Compromise for Quality or Safety"



100 Steam Boilers 9.6-24 HP

# INDUSTRIAL PACKAGED STEAM BOILER

Vertical Water Wall - Horizontal Drum Water Tube

9.6 to 24 HP Gas Fired



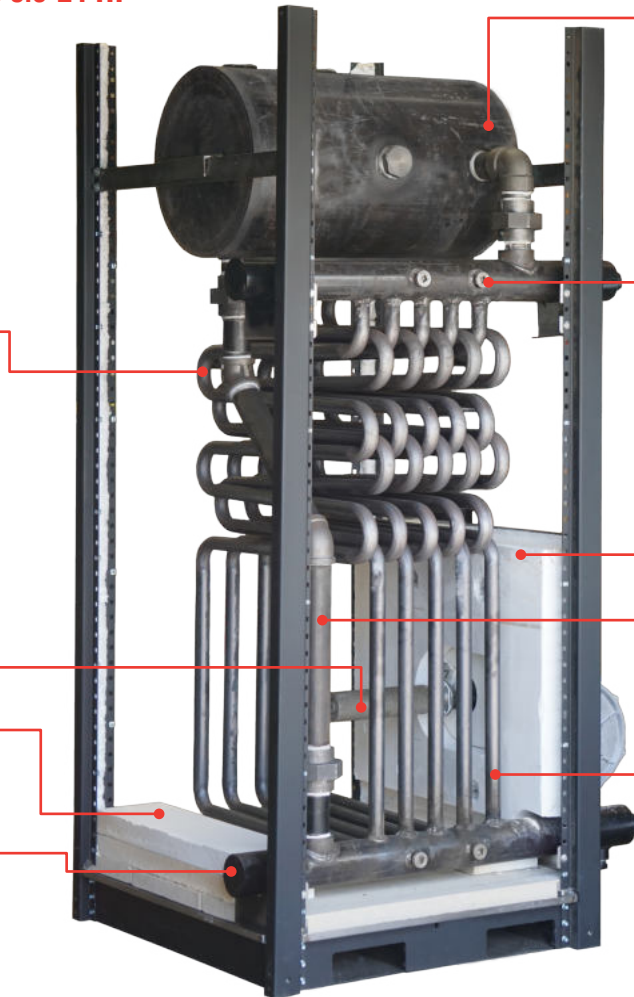
## 100 Series Steam Boilers 9.6-24 HP

Staggered tubes designed to be flexible for free expansion and contraction provide 10 pass baffled heating surface.

Heavy Duty Metal Fiber Burner

Board Floor Insulation

Mud Leg



16" Diameter Horizontal steam drum extra heavy seamless 1/2" thick steel over 60,000 PSI tensile strength

Tube Access Plugs Lower and Upper.

Heavy Duty Insulated Cabinet

Full Size Downcomer.

Tubes welded to headers: 1-5/16" OD, 0.12" (11GA) Heavy Thickness which is almost double that of Standard Gauge Boiler Tubing.

### THE PARKER BOILER DESIGN

A time proven product backed by one of the largest and most successful manufacturers of packaged steam boilers whose name is synonymous with quality and safety. Every boiler is thoroughly factory fire tested and is required to meet the highest standards in all places of mechanical and operating efficiency before shipment.

### ADVANTAGES

#### 16. Dry Steam

Our large horizontal steam drum provides ample steam release area to assure dry steam delivery. No steam separators are required.

#### 17. Internal Accessibility

Cabinet Inspection Panels can easily be removed in a matter of minutes, making the internal boiler, drum, tubes, and burner readily

accessible. Easy-to-remove gasketed access plugs are provided. Boiler inspections can be accomplished quickly and at low costs.

#### 17. Fast Heat-Up

Our boiler requires less than ten minutes to heat up to 100 PSI from a cold start which is a considerable time and fuel saver.

#### 18. Heavy Insulated Cabinet

The cabinet is durably constructed with heavy steel, side wall panels insulated with high temperature thermal fiber insulation to effectively reduce heat losses to a minimum.

#### 19. Tube Bundle

Welded tube bundle. No rolled ferrule fit connections or gaskets.



**"Never a Compromise for Quality or Safety"**

PARKER BOILER CO.  
5930 Bandini Boulevard  
Los Angeles, CA 90040  
Tel (323) 727-9800  
Fax (323) 722-2848  
www.parkerboiler.com

BROCHURE 100 2A0